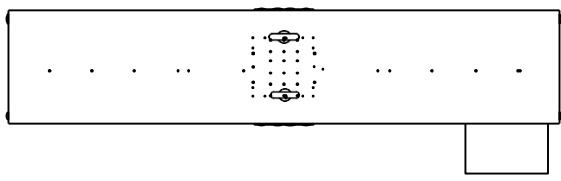


| | | | |
|-----------------|-----|---------|------------------------|
| DWN NO. GENERAL | | SP 1 | REV A |
| REVISIONS | | | |
| ZONE | REV | ECD NO. | DESCRIPTION |
| A | | | RELEASED TO PRODUCTION |
| | | | DATE |
| | | | APPROVED |

NOTES:
 1. VERTICAL POST HAS NO SEAL.
 2. MOTOR REQUIRES 'AIR OVER' FOR CONTINUOUS OPERATION.

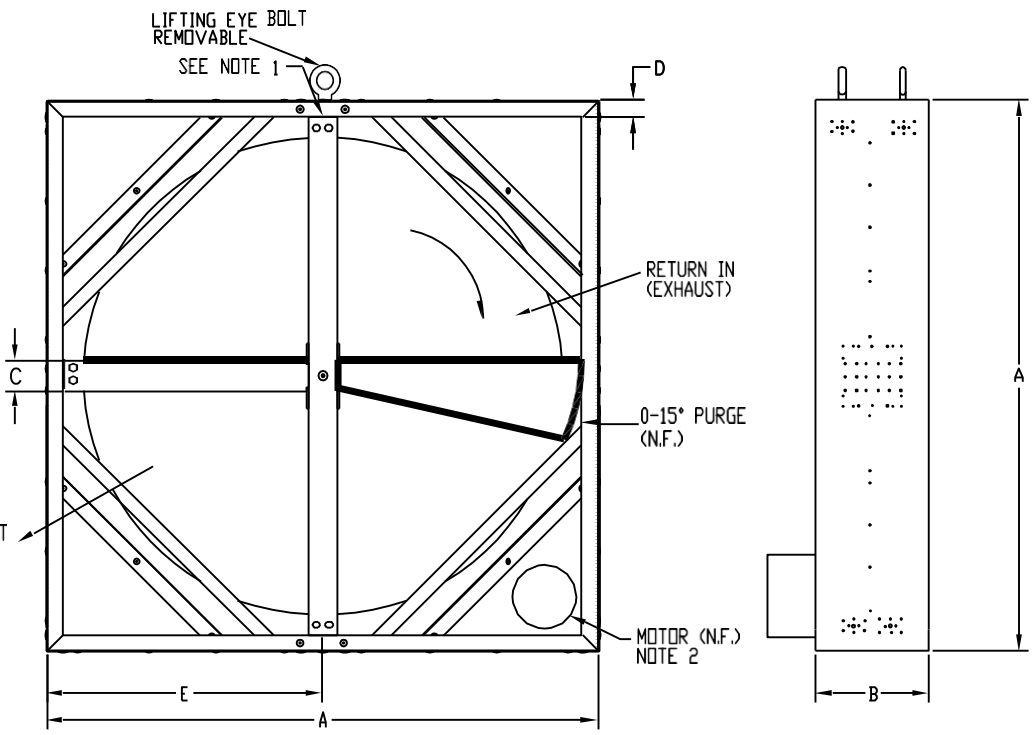


TOP VIEW

APPROVED

BY: _____

QTY=



FRONT VIEW

SIDE VIEW

| WHEEL SIZE | DIM. A | DIM. B | DIM. C | DIM. D | DIM. E | MOTOR SPECIFICATIONS FOR CUSTOMER USE | MTR |
|------------|--------|--------|--------|--------|--------|--|-----|
| ECW666 | 72 | 11 | 4 | 1.5 | 36 | 1 HP., 1800 R.P.M., 115-230V 1Ø 1 HP., 1800 R.P.M., 208-230/460V 3Ø | |
| ECW726 | 78 | 11 | 4 | 1.5 | 39 | 1 HP., 1800 R.P.M., 115-230V 1Ø 1 HP., 1800 R.P.M., 208-230/460V 3Ø | |
| ECW786 | 84 | 12 | 5 | 1.5 | 42 | 1 HP., 1800 R.P.M., 115-230V 1Ø 1 HP., 1800 R.P.M., 208-230/460V 3Ø | |
| ECW846 | 90 | 12 | 5 | 1.5 | 45 | 1-1/2 HP., 1800 R.P.M., 115/208-230V 1Ø 1-1/2 HP., 1800 R.P.M., 230/460V 3Ø | |
| ECW906 | 96 | 12 | 6 | 1.5 | 48 | 1-1/2 HP., 1800 R.P.M., 115/208-230V 1Ø 1-1/2 HP., 1800 R.P.M., 230/460V 3Ø | |
| ECW966 | 102 | 12 | 6 | 1.5 | 51 | 1-1/2 HP., 1800 R.P.M., 115/208-230V 1Ø 1-1/2 HP., 1800 R.P.M., 230/460V 3Ø | |
| ECW1026 | 108 | 12 | 6 | 1.5 | 54 | 1-1/2 HP., 1800 R.P.M., 115/230V 1Ø 1-1/2 HP., 1800 R.P.M., 208-230/460V 3Ø | |

SPECIAL MOTOR SELECTION

| | | |
|--|--|---|
| <p>DO NOT SCALE DRAWING</p> <p>UNLESS OTHERWISE SPECIFIED: .X DECIMAL ± .1 .XX DECIMAL ± .03 .XXX DECIMAL ± .010 ANGLES ± °</p> <p>ALL DIMENSIONS ARE IN INCHES</p> <p>SURFACE TEXTURE: 125 RMS BREAK EDGES: R.05-R.20</p> <p>INTERPRET PER DOD-91D-100</p> | <p>CONTRACT NO.</p> <p>APPROVALS</p> <p>DATE</p> <p>9-20-04</p> <p>CHECKED</p> <p>ISSUED</p> <p>APPROVED</p> | <p>NOVELAIRE</p> <p>TITLE</p> <p>STANDARD ECW GENERAL ARRANGEMENT FOR 150MM WIDE WHEELS</p> <p>SIZE FPM NO. DRAWING NO. REV</p> <p>D 80298 GENERAL A</p> <p>SCALE NONE WT. SHEET</p> |
|--|--|---|