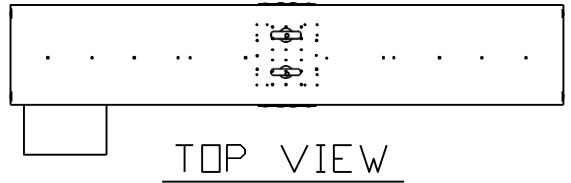


P.O.#	CUSTOMER	DATE:
-	-	-

8	7	6	5	4	3	2	1
---	---	---	---	---	---	---	---

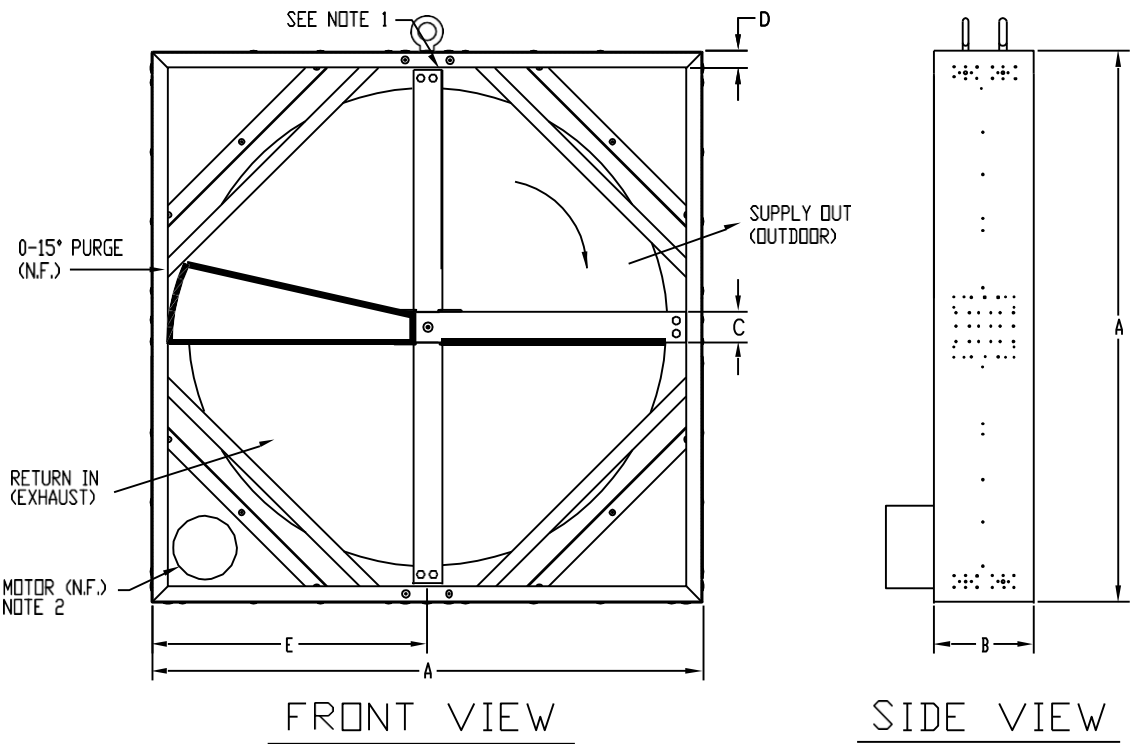
DRAW NO. GENERAL		REV 1		REV A	
REVISIONS					
ZONE	REV	ECCO NO.	DESCRIPTION	DATE	APPROVED
A			RELEASED TO PRODUCTION		

NOTES:
 1. VERTICAL POST HAS NO SEAL.
 2. MOTOR REQUIRES 'AIR OVER' FOR CONTINUOUS OPERATION.



APPROVED
 BY: _____

QTY=1



WHEEL SIZE	DIM. A	DIM. B	DIM. C	DIM. D	DIM. E	MOTOR SPECIFICATIONS FOR CUSTOMER USE	MTP
ECW664	72	9	4	1.5	36	1 HP., 1140 RPM, 115-230V 1Ø 1 HP., 1140 RPM., 208-230/460V 3Ø	
ECW724	78	9	4	1.5	39	1 HP., 1140 RPM., 115-230V 1Ø 1 HP., 1140 RPM., 208-230/460V 3Ø	
ECW784	84	9.50	5	1.5	42	1 HP., 1140 RPM., 115-230V 1Ø 1 HP., 1140 RPM., 208-230/460V 3Ø	
ECW844	90	9.50	5	1.5	45	1-1/2 HP., 1140 RPM., 115/208-230V 1Ø 1-1/2 HP., 1140 RPM., 230/460V 3Ø	

SPECIAL MOTOR SELECTION			CONTRACT NO.		NOVELAIRE	
DO NOT SCALE DRAWING			APPROVALS		DATE	
UNLESS OTHERWISE SPECIFIED:			M. HARRISON		10-17-01	
.X DECIMAL ± .1			CHECKED			
.XX DECIMAL ± .03			ISSUED			
.XXX DECIMAL ± .010			APPROVED			
ANGLES ± °			PART NO.		D 80298	
ALL DIMENSIONS ARE IN INCHES			NEXT ASSY		USED ON	
SURFACE TEXTURE: 125 RMS			APPLICATION		GENERAL	
BREAK EDGES: 20°-330					SCALE: NONE	
INTERPRET PER 900-970-100					REV A	

8	7	6	5	4	3	2	1
---	---	---	---	---	---	---	---