

ComfortDRY
300 SERIES

NOVELAIRE
Creating the Great Indoors™

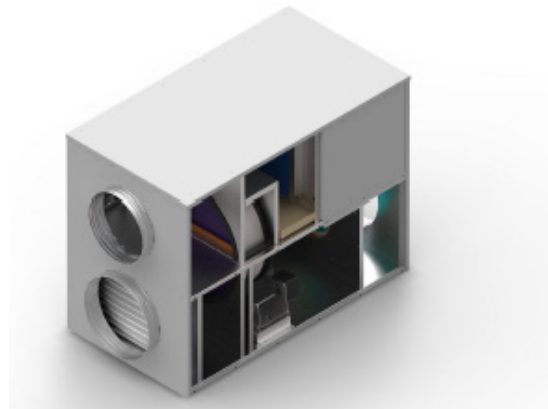
Desiccant Dehumidifier **Advanced Humidity Control**

The ComfortDRY 300 Series desiccant-based dehumidifier is designed specifically for light commercial applications. The unit combines the benefits of both desiccant dehumidification and DX cooling to achieve the most energy

efficient dehumidification without raising the supply air temperature. Waste heat is captured from the condensing coil and used to regenerate the desiccant rotor in order to provide further dehumidification.

BENEFITS:

- The most energy efficient humidity control
- Saves energy by maintaining comfort at higher set point temperatures
- Prevents mold, mildew, and dust mite growth by maintaining 50% RH
- Independent humidity control without raising supply air temperature
- Improves comfort
- Works independent of the HVAC system
- ETL listed



SPECIFICATIONS

Dimensions: (H) 30in x (L) 40in x (W) 22in
 Weight: 220 lbs
 Process Flow: 300 cfm
 Power: 208/203v/60hz/1ph
 FLA 9.3
 ESP: .5 in wc
 Control: 24 vac
 Refrigerant: R-454B
 Cooling Capacity: 9,000 Btu/hr
 Dehumidification Capacity 211 pints/day (78F, 60% RH)

Indoor installation only

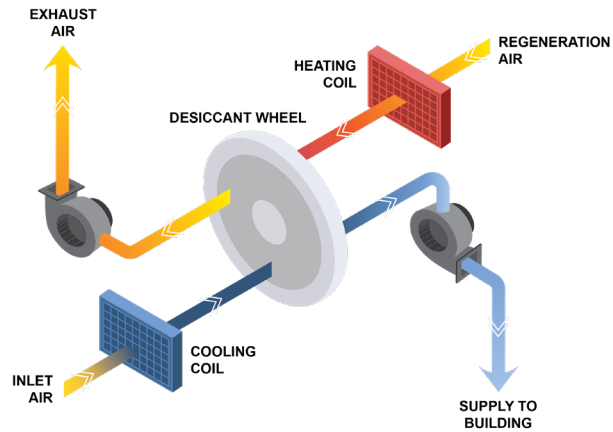
*based on 85/76 DB/WB outdoor air conditions

PERFORMANCE:

Process In		Supply Out*		lb/HR H ₂ O Removed
T DB F	%RH	T DB F	%RH	
80	60	81	28	9.4
80	55	80	27	8.4
76	60	76	29	8.2
76	55	76	27	7.3
72	60	73	28	7.2
72	55	73	26	6.3
70	60	71	28	6.6
70	55	70	28	5.8
65	60	65	30	5.4
65	55	64	30	4.7

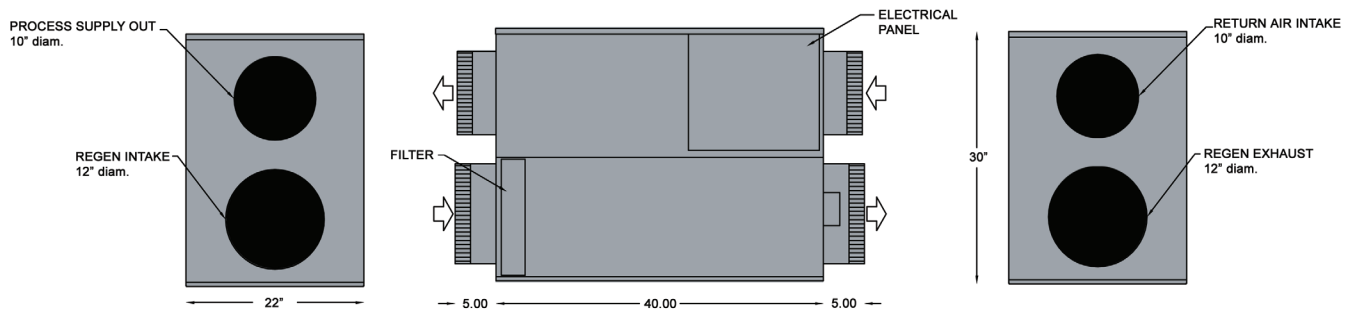
HOW IT WORKS

The core of the ComfortDry 300 dehumidifier is a DX refrigeration loop coupled with a desiccant dehumidification wheel. In dehumidification mode, return air passes first through the evaporator coil where it is cooled and typically experiences some dehumidification and then through the desiccant wheel where the air is dried to a low dewpoint.



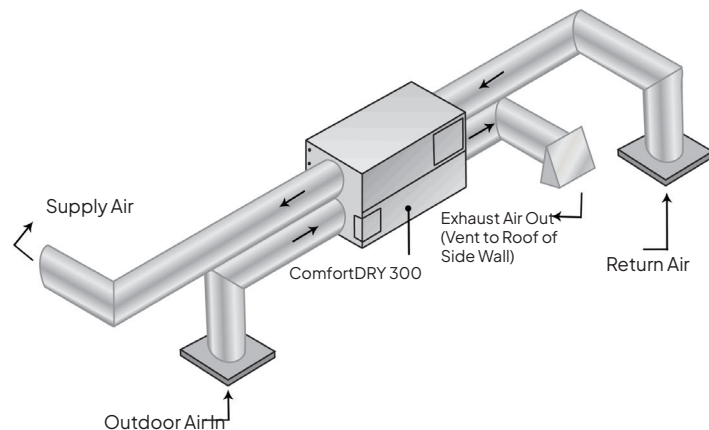
In the isolated regeneration section of the unit, outdoor air is used to capture rejected condenser heat and regenerated (dry) the desiccant wheel. The wet air exiting the regeneration half of the desiccant wheel is exhausted.

DIMENSIONS:



INSTALLATION:

The ComfortDRY 300 is typically installed as shown with its own return air and supply ducts. The supply air ducts is branched to two or three supply air ducts servicing main rooms of the building. The ComfortDRY 300 is controlled by a separate humidistat and will cycle on and off to control humidity independently of the main A/C system.



NOVELAIRE

info@novelaire.com

www.novelaire.com

unitsales@novelaire.com

10132 Mammoth Ave.,

Baton Rouge, LA 70814-4420

tel. 800.762.1320

fax. 225.930.0340



Specifications and illustrations subject to change without notice and without incurring obligation. ©NovelAire 2026. All Rights Reserved