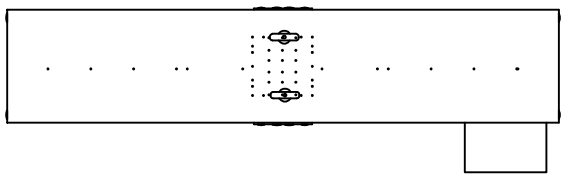


DWG NO. GENERAL		REV 1	REV A
REVISIONS			
ZONE	REV	ECCD NO.	DESCRIPTION
A			RELEASED TO PRODUCTION
			DATE
			APPROVED

NOTES:
 1. VERTICAL POST HAS NO SEAL.
 2. MOTOR REQUIRES 'AIR OVER' FOR CONTINUOUS OPERATION.

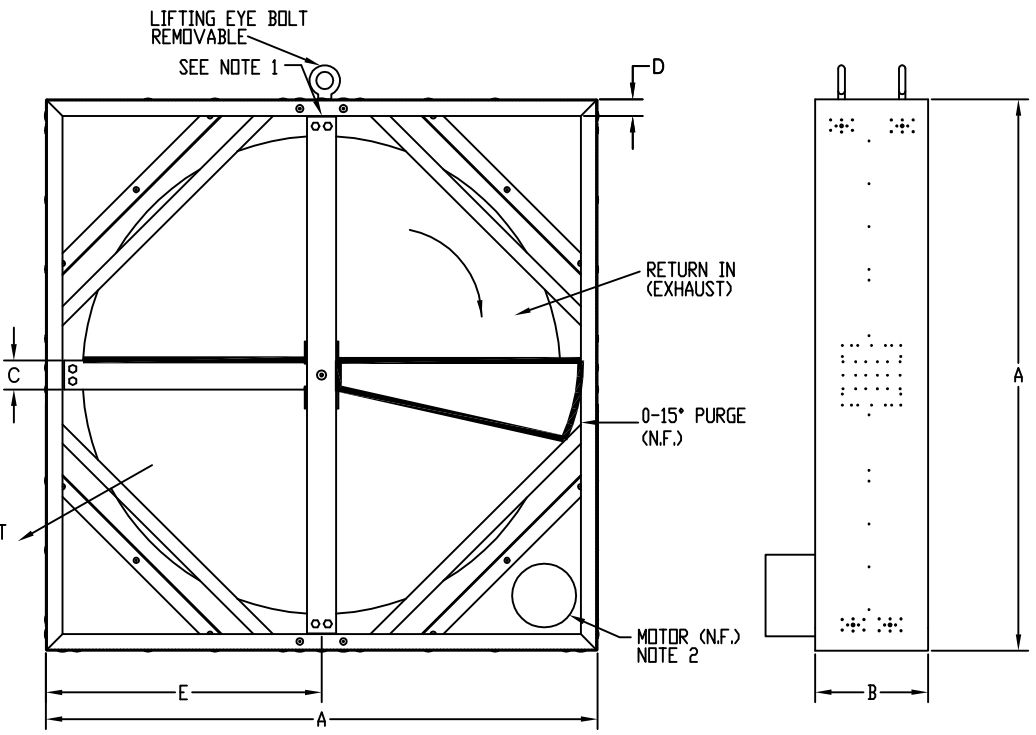


TOP VIEW

APPROVED

BY: _____

QTY=



FRONT VIEW

SIDE VIEW

WHEEL SIZE	DIM. A	DIM. B	DIM. C	DIM. D	DIM. E	MOTOR SPECIFICATIONS FOR CUSTOMER USE	NTR
ECW666	72	11	4	1.5	36	1 HP., 1800 R.P.M., 115-230V 1Ø 1 HP., 1800 R.P.M., 208-230/460V 3Ø	
ECW726	78	11	4	1.5	39	1 HP., 1800 R.P.M., 115-230V 1Ø 1 HP., 1800 R.P.M., 208-230/460V 3Ø	
ECW786	84	12	5	1.5	42	1 HP., 1800 R.P.M., 115-230V 1Ø 1 HP., 1800 R.P.M., 208-230/460V 3Ø	
ECW846	90	12	5	1.5	45	1-1/2 HP., 1800 R.P.M., 115/208-230V 1Ø 1-1/2 HP., 1800 R.P.M., 230/460V 3Ø	
ECW906	96	12	6	1.5	48	1-1/2 HP., 1800 R.P.M., 115/208-230V 1Ø 1-1/2 HP., 1800 R.P.M., 230/460V 3Ø	
ECW966	102	12	6	1.5	51	1-1/2 HP., 1800 R.P.M., 115/208-230V 1Ø 1-1/2 HP., 1800 R.P.M., 230/460V 3Ø	
ECW1026	108	12	6	1.5	54	1-1/2 HP., 1800 R.P.M., 115/230V 1Ø 1-1/2 HP., 1800 R.P.M., 208-230/460V 3Ø	

SPECIAL MOTOR SELECTION

DO NOT SCALE DRAWING UNLESS OTHERWISE SPECIFIED: .X DECIMAL ± .1 .XX DECIMAL ± .03 .XXX DECIMAL ± .010 ANGLES ± °		CONTRACT NO.		NOVELAIRE TECHNOLOGIES TITLE: STANDARD ECW GENERAL ARRANGEMENT FOR 150MM WIDE WHEELS	
ALL DIMENSIONS ARE IN INCHES SURFACE TEXTURE 125 RMS DIMEN TOLER: 205-330 INTERPRET PER 600-670-100		APPROVALS			
PART DASH NO.	NEXT ASSY	USED ON	APPROVED	DATE	SCALE: NONE WT.
APPLICATION			ISSUED	9-20-04	REV A