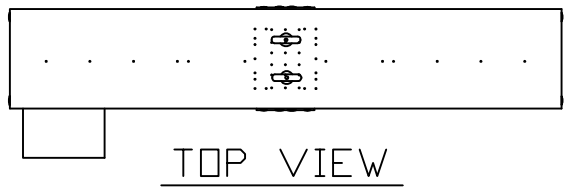


P.O.#	CUSTOMER	DATE:
-	-	-

8	7	6	5	4	3	2	1
---	---	---	---	---	---	---	---

DRAWING NO.		GENERAL	REV 1	REV A
ZONE		REV	EDD NO.	REVISIONS
A				RELEASED TO PRODUCTION
				DATE
				APPROVED

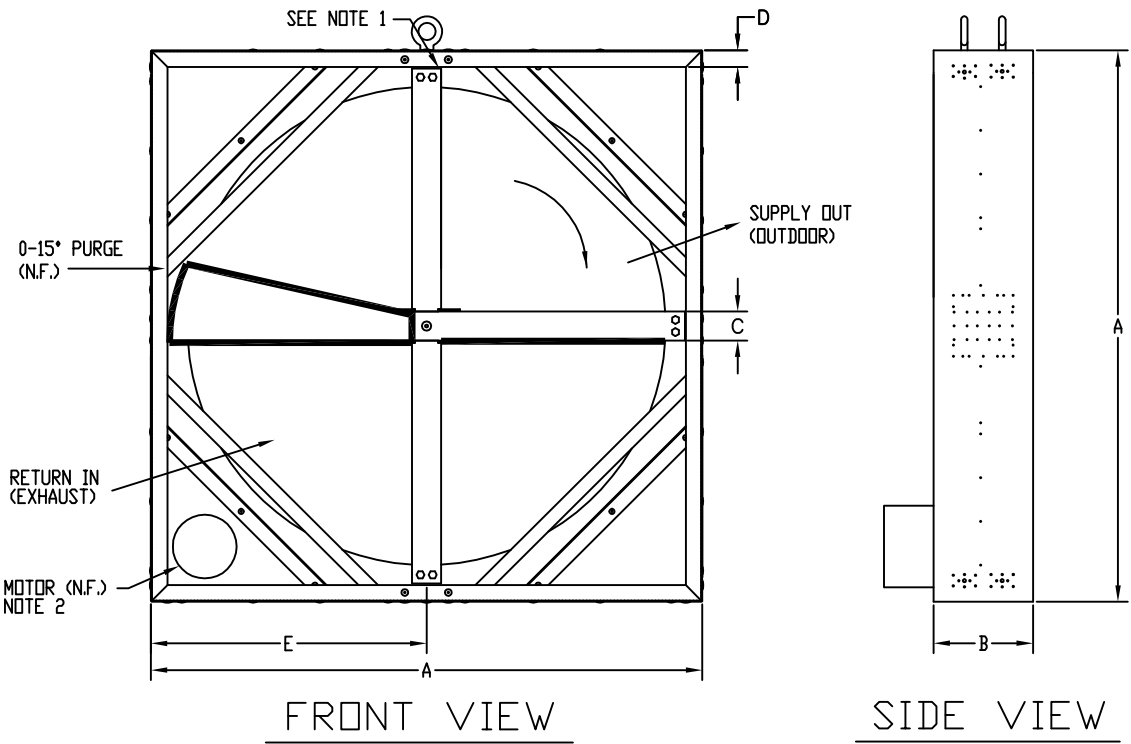
NOTES:
 1. VERTICAL POST HAS NO SEAL.
 2. MOTOR REQUIRES 'AIR OVER' FOR CONTINUOUS OPERATION.



APPROVED

BY: _____

QTY=1



WHEEL SIZE	DIM. A	DIM. B	DIM. C	DIM. D	DIM. E	MOTOR SPECIFICATIONS FOR CUSTOMER USE	MTR
ECW664	72	9	4	1.5	36	1 HP., 1140 R.P.M., 115-230V 1Ø 1 HP., 1140 R.P.M., 208-230/460V 3Ø	
ECW724	78	9	4	1.5	39	1 HP., 1140 R.P.M., 115-230V 1Ø 1 HP., 1140 R.P.M., 208-230/460V 3Ø	
ECW784	84	9.50	5	1.5	42	1 HP., 1140 R.P.M., 115-230V 1Ø 1 HP., 1140 R.P.M., 208-230/460V 3Ø	
ECW844	90	9.50	5	1.5	45	1-1/2 HP., 1140 R.P.M., 115/208-230V 1Ø 1-1/2 HP., 1140 R.P.M., 230/460V 3Ø	

SPECIAL MOTOR SELECTION		CONTRACT NO.		NOVELAIRE TECHNOLOGIES	
DO NOT SCALE DRAWING UNLESS OTHERWISE SPECIFIED: .X DECIMAL ± .1 .XX DECIMAL ± .03 .XXX DECIMAL ± .010 ANGLES ± °		APPROVALS	DATE	TITLE	
ALL DIMENSIONS ARE IN INCHES SURFACE TEXTURE 125 RMS BREAK EDGES .015-.030 INTERPRET PER 900-910-100		DRAWN M. HARRISON	10-17-01	STANDARD ECW GENERAL ARRANGEMENT FOR 100MM WIDE WHEELS	
PART DASH NO.	NEXT ASSY	USED ON	ISSUED	SCALE	REV
APPLICATION			APPROVED	D 80298	GENERAL A
				SCALE: NONE	WT.

8	7	6	5	4	3	2	1
---	---	---	---	---	---	---	---